

Technical Data Sheet TI-A12

Safety Catchers series KRP (with DGUV approval)

Load direction compressive (to mounting surface)

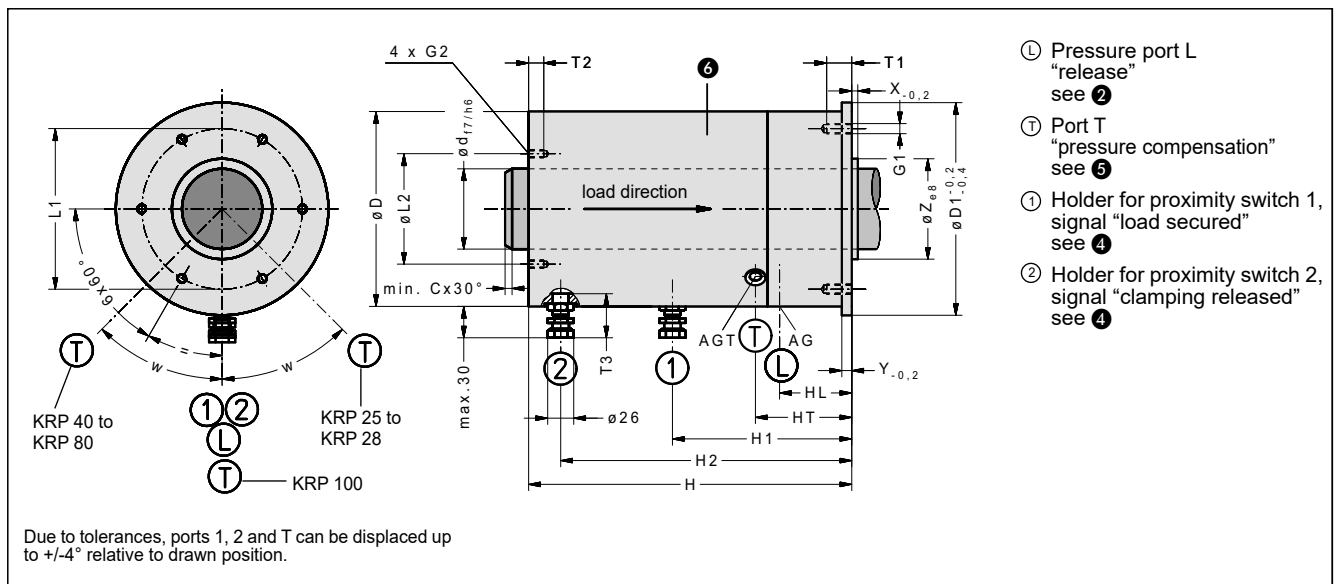


Fig. 1: Dimensions of Safety Catcher KRP (download CAD files from www.sitema.com)

Type	ID no. (order no.)	d mm	C mm	M kN	D mm	D1 mm	H mm	Y mm	Z mm	X mm	L1 mm	G1 mm	T1 mm	L2 mm	G2 mm	T2 mm	V cm ³	T3 mm	AG mm	AGT mm	HL mm	HT mm	H1 mm	H2 mm	w mm	Wt. kg
KRP 25	KR 025 31	25	4	10	71	81	152	5	40	3	56	M6	15	64	M5	12	20	32	G1/8	G1/8	36	84	84	130	90°	4.5
KRP 28	KR 028 31	28	4	15	82	92	169	5	45	3	65	M8	15	73	M5	12	30	32	G1/8	G1/8	39	88	88	145	90°	5.5
KRP 40	KR 040 31	40	4	33	106	123	211	8	52	3	80	M8	20	56	M6	12	50	34	G1/4	G1/8	47	102	167	125	50°	10
KRP 56	KR 056 31	56	4	67	140	156	262	8	70	3	115	M10	25	75	M6	12	80	45	G1/4	G1/8	52	118	166	122	30°	20
KRP 80	KR 080 31	80	4	133	194	212	322	10	100	3	160	M10	25	110	M8	16	150	45	G1/4	G1/4	54	125	128	176	30°	58
KRP 100	KR 100 21	100	5	220	240	-	365	-	120	7	160	M12	24	135	M8	16	340	34	G3/8	G1/4	22	122	285	235	0°	91

bold types = preferential sizes, available from stock

Subject to modification without prior notice

1 M is the admissible load the mass to be secured exerts on the Safety Catcher. The holding (braking) force for dry or hydraulic-oil wetted rods is not less than $2 \times M$ but will not exceed $3.5 \times M$.

2 The necessary pressure to keep the clamping released is 4 bar. In case a spring base is installed, the required pressure for releasing without lifting is 6 bar, see "Technical Data Sheet TI-A20". The admissible operating pressure is 10 bar.

3 Pneumatic operating volume

4 Proximity switch holders are provided for standard inductive proximity switches (M12 x 1, nominal switching distance 2 mm, flush mountable, NO (normally open); except KRP 25 and KRP 28: M8 x 1 with a nominal switching distance of 1.5 mm).

The dimension T3 indicates how deep the proximity switch immerses in the Safety Catcher measured from the holder's top.

KRP 25 to KRP 80: For easier service, the proximity switch holders have a depth stop and are pre-adjusted when delivered from the factory. The switches only need to be inserted to the stop and then clamped.

The proximity switches are not included in the standard scope of delivery but are available as accessories.

KRP 40, KRP 56 and KRP 100: The holders for proximity switches are arranged in reverse ($H1 > H2$).

5 Internal volume changes during switching are compensated at port T. It is plugged with an air filter which, in a dry and clean factory environment, offers sufficient protection against dust etc.

If, however, moisture or aggressive media are present, a pressureless hose instead of the filter must be installed to connect the Safety Catcher with clean atmosphere (e.g. a clean pressureless container).

6 The surface of the housing parts is primed black, the front sides are treated with corrosion protection wax.